

We are so happy you
chose a hama product.

Enjoy using it!

hama

00
220801

Quick Installation Guide

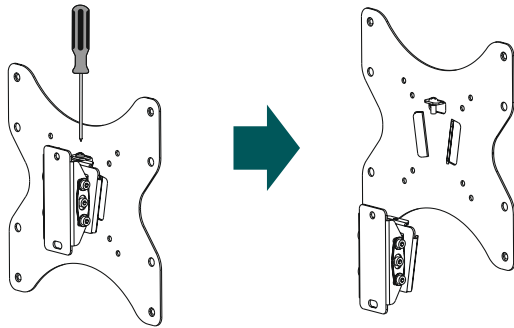
Required tools



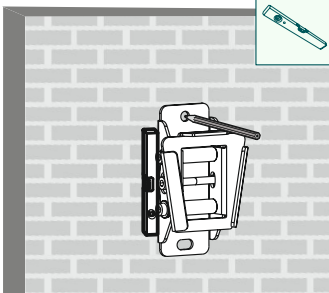
Installation kit

A1		6x55 (x2)	D1		M8x12 (x4)
A2		Ø8x50 (x2)	D2		M8x20 (x4)
A3		M6 (x2)	D3		M8x30 (x4)
B1		M6 (x4)	E1		M4x12 (x4)
B2		Ø8x10 (x4)	E2		M4x20 (x4)
B3		Ø8x20 (x4)	E3		M4x45 (x4)
C1		M6x12 (x4)	F1		(x1)
C2		M6x20 (x4)			

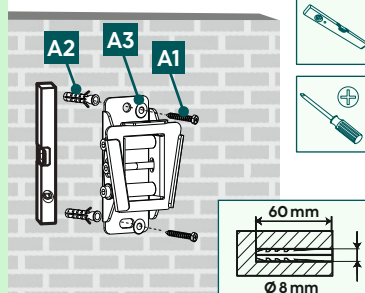
1 Preparing the bracket



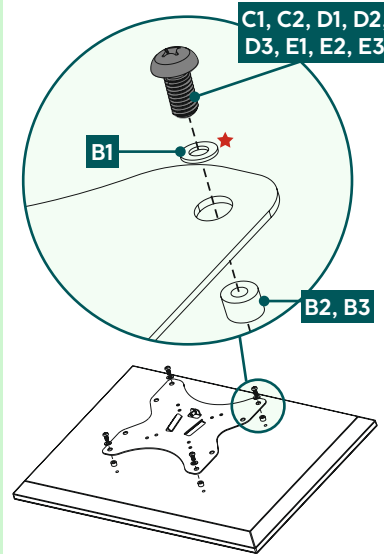
2 Mark the holes



3 Drilling the holes



4 Mounting on backside of the TV



Flat TV backside

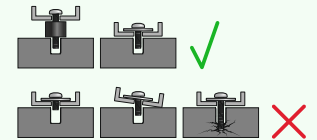
C1, D1, E1, E3 + B1

Curved TV backside

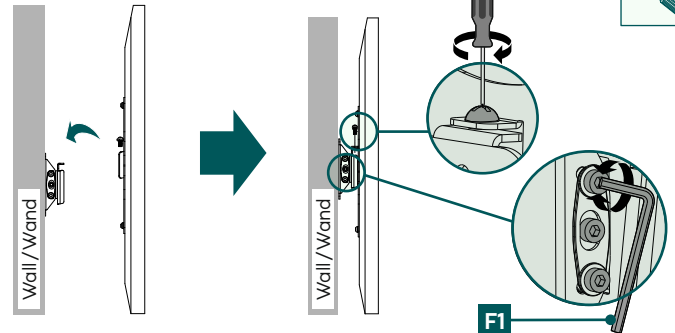
C2, D2, E2, E3 + B1 + B2

D3, E3 + B3

★ You do not need a washer for the D-screws



5 Adjustment & Fixing



???

Do you need more help?



Scan QR or visit: www.hama.com
 ➔ Q ➔ 00220801 ➔ Downloads

