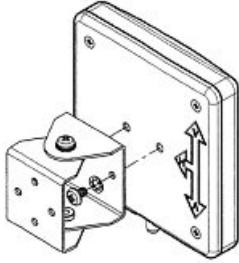
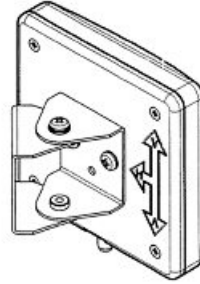


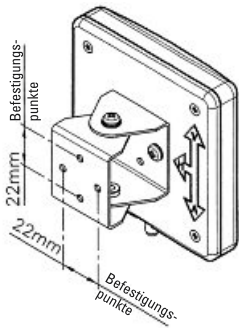
ⓓ Montageanleitung



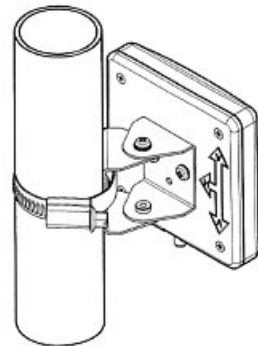
1. Der Montagesatz zur Befestigung an der Rückseite der Antenne ist im Lieferumfang enthalten.



3. Mit zwei geeigneten Schrauben an der Wand befestigen (nicht im Lieferumfang).



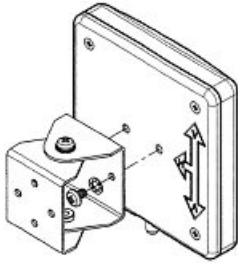
2. Montierte Antenne zeigt die Position der Montagebohrungen.



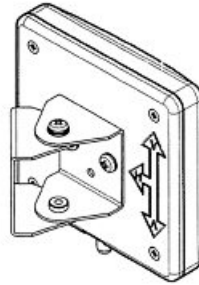
4. Alternative Methode zur Befestigung an einem Rohr mit einer Schlauchschelle (nicht im Lieferumfang)

5. Wahlweise kann die Antenne auch an der mitgelieferten Tischhalterung befestigt werden

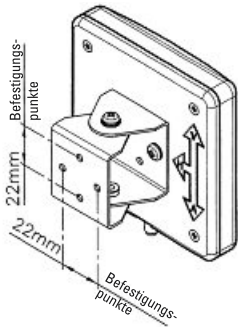
Ⓜ Mounting Instruction



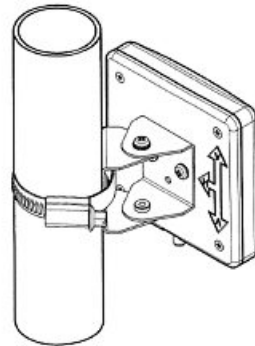
1. Mount bracket assembly to back of antenna as shown using screws and washers supplied.



3. Secure to wall using 2 appropriate screws (not supplied).



2. Assembled antenna showing mounting hole positions.



4. Alternative method of fixing to tube using a jubilee clip (not supplied).

5. The antenna can also be attached to the supplied table bracket.

hama®

Hama GmbH & Co KG
D-86652 Monheim
www.hama.com

All listed brands are trademarks of the corresponding companies.
Errors and omissions excepted, and subject to technical changes.
Our general terms of delivery and payment are applied.

00093569/11.12