

Contents

1.	Installing the driver and configuration program on Windows	Page 03
2.	The configuration program – introduction and operation on Windows	Page 04
2.1	WPS Automatic configuration	Page 04
2.2	Detailed configuration	Page 04
2.2.1	Creating a new profile	Page 05
2.2.1.1	Infrastructure mode	Page 05
2.2.1.2	Ad-hoc mode	Page 05
2.2.2	Setting the wireless LAN encryption	Page 06
2.2.2.1	WEP encryption	Page 06
2.2.2.2	WPA/WPA2 encryption	Page 06
3.	Configuring the operating system and computer (Windows)	Page 07
4.	Uninstalling the driver and configuration program on Windows	Page 08
5.	Installing the driver and configuration program on MAC OS X	Page 08
6.	Configuring the operating system and computer (MAC OS X)	Page 08
7.	The configuration program – introduction and operation on MAC OS X	Page 09
7.1	Quick configuration	Page 09
7.2	Detailed configuration	Page 10
7.2.1	Creating a new profile	Page 10
7.2.2	Setting the wireless LAN encryption	Page 10
7.2.2.1	WEP encryption	Page 11
7.2.2.2	WPA/WPA2 encryption	Page 11
8.	Support and contact information	Page 12

Package contents:

- 1x Wireless LAN USB Stick 150 Mbps
- 1x USB connection cable
- 1x driver CD-ROM
- 1x printed operating instructions

Remark concerning the positioning:

The connection quality depends strongly on the place or surroundings where you put up the WLAN device. Please ensure that the device or its antenna are neither covered nor built in. Use the enclosed USB extension cable for this purpose. We advise you against putting it up near metallic objects or other electric or radiant devices. In case of reception fluctuations or connection interruptions we recommend you to move interference sources such as DECT telephones, mobile phones, Bluetooth devices or other WLAN networks out of the way. If this is not possible, it may also be helpful to change the channel.

System requirements:

- PC or laptop with free USB port
- Operating system Windows 2000/XP/XP-x64 Edition, Vista or MAC OS X 10.3.x/10.4.x/10.5.x.

Safety instructions:

Do not operate the device in damp or extremely dusty environments. Protect the device from pressure and impact. The device may not be opened or moved during operation.

1. Installing the driver and configuration program on Windows

Before installation, please save any open documents you may be working on. Then close all running programs. Insert the CD-ROM provided in the drive. Usually, the CD starts automatically. If the menu does not start automatically, double-click the corresponding CD-ROM drive icon in My Computer. The following window opens after the program starts: Select the required language. The following window is displayed when you select the language.



Note for Windows Vista:

If an „Auto Play“ window appears after inserting the CD-ROM, click on „Run autorun.exe“.

This installation process is suitable for Windows 2000/XP/XP-x64 Edition/Vista.

Click **Install** to continue with the installation. Click **User Guide** to open the operating instructions. Adobe Reader is required to display PDF files. If you have not yet installed Adobe Reader, you will find a free version on the enclosed driver CD. Click **Download driver** to download the latest driver from the Hama website. This allows you to check whether drivers have now been developed for previously unsupported systems. Click **Back** to return to language selection.



Note for Windows Vista:

The message „An unidentified program wants to access your computer“ appears. Allow access by clicking on „Allow“.

When you select Install, the InstallShield Wizard is loaded. This can take a few seconds. Please wait until the InstallShield Wizard starts.

Read the licences agreement. Select “I accept the terms of the license agreement” if you accept them and then click Next.

For Windows XP users only

The next screen prompts you to choose whether you want to configure the Wireless LAN Adapter using the Hama Configuration Program or the configuration program integrated in Windows. We recommend that you use the Hama Configuration Program. To do so, select **Hama Wireless Utility** and click **Next**.

Then click **Install** to start the installation.

Click **Finish** to complete the installation and connect the WLAN adapter to the computer. You may have to restart the operating system.

2. The configuration program – introduction and operation on Windows

Open the Hama Configuration Program. To do so, click Start -> Programs -> Hama Wireless LAN -> Hama Wireless LAN Utility. If the program is already running in the background, you will find in the task bar at the bottom right of the screen:



Double click the circled symbol to open the utility from the task bar. The Hama Wireless LAN Utility starts with the following screen, whereby the values in the columns may be different.

This screen shows all available wireless networks.

Note on arrow at bottom right

Click on the bottom right arrow to display additional details. Repeat to minimize the window.

The lower section of this window shows the connection status (**Connected / Disconnected**). Click **Update** to search for wireless networks again.



2.1 WPS Automatic configuration

WPS (WiFi Protected Setup) is a function that makes the security configuration of the Wireless LAN connection easier. In order to be able to use the function, the router/access point and the remote station (WLAN USB stick, PCI card or PCMCIA card) must have the WPS function. To carry out the security configuration, proceed as follows:

The router/access point specifies which encryption and which key is used. The encryption entered here applies to all users of the network.



There are two methods:

a) Configuration using the button

Press the **WPS button** on the router/access point. You must press the button on the WLAN adapter or the PBC button on the WPS tab page in the WLAN adapter's configuration program within two minutes. The connection is now established automatically.

b) Pin code

Make a note of the **pin code**, which is displayed in the WLAN adapter's configuration program. Select the target network in the upper list and then click **PIN**. Switch to the user interface of the router. If your router supports this method, you will find an entry field for the **pin code** in the WPS settings. Enter the code you noted earlier and start the transmission. The connection is now established automatically.

If the connection is successful, a profile is created, which is restored automatically when you Start.

For detailed information on setting encryption, please see Page 6, under the heading: Setting the wireless LAN encryption.

2.2 Detailed configuration

When configuring your USB stick, it is useful to create a **profile**. A profile serves to save various settings for a connection under a certain name. For example, if you want to connect to various wireless networks, you can save the settings for the networks in profiles, which allows you to change the configuration quickly.

2.2.1 Creating a new profile

You need the following information to create a profile:

- **SSID** (network ID): This is the name of the required network.
- **Encryption** used in the target network
- **Network type** (type of network): Infrastructure or ad-hoc

There are two basic ways to create a profile:

Version 1 : Change to the **Profile** tab and click **Add**.

or

Version 2 : Open the **Network** tab. All networks are listed in this tab. Select the required network in the list and click **Add to profile**.

For hidden networks only:

If the SSID field is empty, the router or access point is set to hide the network. The SSID cannot therefore be copied automatically.

In both cases, the following window is displayed on the screen:

This USB stick allows you to set up two different network types.

Infrastructure: Select this type if you want to connect this wireless LAN device to a wireless LAN router or access point.

Ad-hoc: Select this type if you want to connect directly to another wireless LAN client device, e.g. another USB stick or a WLAN PCI card without a wireless LAN router or access point. Two WLAN client devices are required for this.



2.2.1.1 Infrastructure mode

First enter a name for your profile (**Profile name**), e.g. "PROF1".

If you have selected **version 1** to create the new profile, you must enter the network ID (**SSID**) of the target network in the SSID field. This is in the wireless LAN settings in your router or access point or you can ask the person in charge. If you have selected **version 2**, the **SSID** has already been copied automatically from the network overview.

To reduce the energy consumption, you can run the stick in **Power saving mode (PSM)**. In this mode, certain functions are deactivated or run at a lower setting if they are not fully used. Select **Constantly Awake Mode (CAM)** if you want to work at full power all the time.

Select **Infrastructure** under network type. This mode facilitates connection to a wireless LAN router or access point. The settings for **TX Power**, **RTS Threshold** and **Fragment Threshold** can be left at the default settings.

If your network uses encryption, switch to the **Auth.\Encry.** tab and continue configuration.

If your network is not encrypted, click **OK** to accept the settings. To activate the profile created, switch to the **Profiles** tab, select the profile and then click **Activate**.

2.2.1.2 Ad-hoc mode

First enter a name for your profile (**Profile name**), e.g. "PROF1".

If you have selected **version 1** to create the profile, you must enter the network ID (SSID) of the target network in the **SSID** field.

If you have selected **version 2**, the **SSID** has already been copied automatically from the network overview.

Select **Ad-hoc** under network type. This mode allows you to connect to other wireless LAN client devices, e.g. USB sticks, PCI cards or cardbus. The settings for **TX Power**, **Preamble**, **RTS Threshold** and **Fragment Threshold** can be left at the default settings.

You must also set the wireless LAN channel used under **Channel**. In Europe, there are 13 channels in the 2.4 GHz frequency range.

If your network uses encryption, switch to the **Auth.\Encry.** tab and continue configuration.

If your network is not encrypted, click **OK** to accept the settings. To activate the profile created, switch to the **Profiles** tab, select the profile and then click **Activate**.

2.2.2 Setting the wireless LAN encryption

First, it is important to understand a range of terms. The next section will explain the main terms used here:

Authentication: Authentication is a process in which the identity, e.g. of a person is determined based on a certain characteristic. This can be done by fingerprint, password or any other proof of authorisation.

Encryption: Encryption is a process in which a plain text is transformed into a coded text via an encryption process (algorithm). One or more codes can be used for this. It must also be mentioned that each individual encryption process offers one or more authentication options.

Please switch to the **Auth\Encry.** tab.

This device can be used with the following encryption types:

64 and 128 bit WEP encryption and WPA and WPA2 encryption

Note!!! Encryption is deactivated by default. However, for security reasons, we recommend that you always use encryption.

2.2.2.1 WEP encryption

Wired Equivalent Privacy (**WEP**) is a standard encryption algorithm for WLAN. It both controls the access to the network and guarantees the integrity of the data. This method is considered vulnerable due to a range of weaknesses.

If you want to use WEP encryption, select **WEP** under encryption. Two options are available for the Authentication type under WEP.

Select **Open** if all clients are to be enabled for WLAN. Now there is virtually no other authentication.

Select **Shared** if you want to use authentication with the challenge response process. A shared code is used for authentication in this method. All WLAN users must know this code.



All other selection options under Authentication type are meaningless under WEP.

You can now store four codes in the lower section of the window (Only a key with Windows Vista). The selected code is always used. 64 bit or 128 bit encryption is supported. 128 bit encryption is more secure. First select whether you want to use **Hex** (allows characters from 0-9 and a-f to be used) or **ASCII** characters (You can use any characters). The setting and the selection of either 64 or 128 bit encryption determines the length of the code to be entered.

WEP 64 bit ASCII requires 5 characters
WEP 64 bit HEX requires 10 characters
WEP 128 bit ASCII requires 13 characters
WEP 128 bit HEX requires 26 characters

Examples: 64 bit Hex (10 characters) = 231074a6ef
 64 bit ASCII (5 characters) = j31n.

 128 bit Hex (26 characters) = 231074a6b9773ce43f91a5bef3
 128 bit ASCII (13 characters) = urlaub2006.+0

2.2.2.2 WPA/WPA2 encryption

Wi-Fi Protected Access (**WPA**) is an encryption method for WLAN. WPA contains the WEP architecture, but offers additional protection via dynamic codes, which are based on the Temporal Key Integrity Protocol (TKIP), and also offers pre-shared keys (PSK) or extensible authentication protocol (EAP) for user authentication. However, a radius server is required for this. **WPA2** is a development of WPA and uses a different encryption algorithm, advanced encryption standard (AES).

WPA offers two types of authentication, either **pre-shared key** or authentication via special **authentication protocols**, which are generally variations of EAP (Extensible Authentication Protocol). An authentication server (**RADIUS server**) is used for the latter authentication method, which is rarely used for private applications. Your administrator can give you the information you require to configure this authentication method.

The **pre-shared key** method is more common and offers a high degree of security.

To use **WPA encryption**, select WPA-PSK under Authentication type and **TKIP** under Encryption.

Now enter the code used in the **WPA preshared key** field. The code entered must be absolutely identical with that used in the network. It must be min. 8 and max. 63 random characters for ASCII. Letters (A-Z), numbers and punctuation marks can be used. 64 characters are required for HEX, whereby only characters from 0-9 and a-f can be used. If you do not have this code, it can be found in your router/access point or you can ask the person responsible for these devices. Save the settings and click **OK**.

To use **WPA2 encryption**, select **WPA2-PSK** under Authentication type and **AES** under Encryption. Now enter the code used in the WPA preshared key field.

The code entered must be absolutely identical with that used in the network. It must be min. 8 and max. 63 random characters for ASCII. Letters (A-Z), numbers and punctuation marks can be used. 64 characters are required for HEX, whereby only characters from 0-9 and a-f can be used. If you do not have this code, it can be found in your router/access point or you can ask the person responsible for these devices.

Save the settings and click **OK**. To activate the profile created, switch to the **Profiles** tab, select the profile and then click **Activate**.

3. Configuring the operating system and computer (Windows)

After you have successfully installed the network adapter, you still have to install or configure a protocol. This protocol governs the data exchange between the computer and the network. TCP/IP is most common. Each computer has to be assigned its own address for the protocol. Automatic address assignment is only reliable if a DHCP server exists in the network, e.g. a router or access point. If you have one of these devices with a DHCP function, you should leave the setting on "Get automatically".

Proceed as follows to check the settings on your PC:

Start -> Settings -> Control panel -> Network connections

Select the connection (network adapter) via which your PC is connected to the router, e.g. "LAN connection". When you **right-click** the corresponding connection, the following screen is displayed when you select **Properties**.

Select the **Internet Protocol (TCP/IP)** entry in the list and click **Properties**.

Select **Obtain an IP address automatically** and **Obtain DNS server address automatically**, if there is a DHCP server in your network. Confirm by clicking **OK**, and again in the subsequent window.

Your PC is now configured such that the router assigns the IP address automatically.

If you do not have a device with an integrated DHCP server, you must assign the IP addresses manually. The following example describes basic setup using manual address assignment. For local networks, special address ranges are provided which are not transmitted over the internet. As an example, a range that you can use for your network is 192.168.1.1 to 192.168.1.254. The first PC is assigned the address 192.168.1.1, the second 192.168.1.2, the third 192.168.1.3, etc.

Select **Use the following IP address** and enter your IP address in accordance with the sample.

- 1.PC = IP address 192.168.1.1 Subnet mask 255.255.255.0
- 2.PC = IP address 192.168.1.2 Subnet mask 255.255.255.0

Click **Ok** to confirm your entries.



4. Uninstalling the driver and configuration program on Windows

Save all open documents and close all programs before uninstalling.

Select **Start => Settings => Control Panel => Software**

To do so, select **Hama Wireless LAN Adapter** and click **Remove**. At the next prompt, click **Yes**. Remove the WLAN adapter and then click **Finish**.

5. Installing the driver and configuration program on MAC OS X

Before installation, please save any open documents you may be working on. Then close all running programs. Ensure that you have administrator authorisations to enable you to install the driver correctly.

Connect the Hama WLAN USB stick to a free USB 2.0 port. Then start your Apple computer. After the operating system has loaded completely and the desktop is complete, insert the enclosed driver CD-ROM in your drive. An icon with the CD-ROM then appears on your desktop. Double-click the icon and select the MAC driver directory in the Finder window. This directory contains the DMG file required for installation. Double click the **DMG file** to activate the image.

After you activate the image, select the correct directory for your installed MAC OS X Version and then double click the corresponding **PKG file**. Installation is now started.

Select your hard drive on which you want to install the driver and the configuration program. You must then restart the system.

6. Configuring the operating system and computer on MAC OS X

After you have installed the driver, you must configure the network environment in accordance with the new situation. To do so, proceed as follows.

Click the **Apple** symbol in the upper menu bar and select the **Environment** menu item.

Select the **"Network"** setting menu item. The following window opens.

Click **OK** to confirm the message.



Note: If the message shown above is not displayed, the Hama WLAN USB Stick was not correctly identified by your PowerMac. Ensure that the stick is correctly connected to a USB 2.0 port and that the USB 2.0 interface card was correctly installed in your system.

After the Hama WLAN USB Stick has been properly detected, the following window opens.

Select the **New environment...** option under Environment. Name the new environment e.g. WLAN and click the **OK** button.



Select the **Environment** menu item again in the Network window and select the New environment which has also been selected, **WLAN** in our case. Next, select the **Show/Display** menu item in the Network window and select the **Network configurations** option.

Note: The process for selecting the connections can vary depending on the MAC model and features.

In our case, remove the tick for all connections except the Ethernet connection (**en2**). Then click the **Activate** button. The configuration process is now complete for your system.



7. The configuration program – introduction and operation on MAC OS X

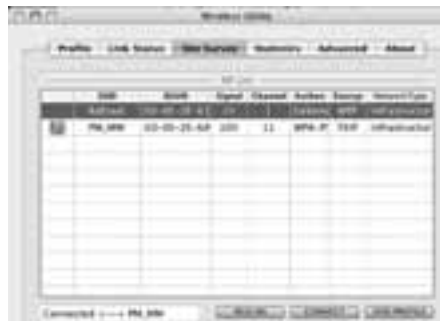
As the Hama WLAN USB Stick is not an official Apple Airport product, you cannot use the Airport software integrated in the system. To configure the Hama WLAN USB Stick, you must open the enclosed utility. Open the finder and select the hard drive where you installed the driver and the utility earlier. The utility is installed in the Programs directory by default. Double-click the USB Wireless Utility icon.



The following window opens:

This screen shows all available wireless networks. The **SSID**, which is used to identify WLAN devices in the respective wireless LAN, the router MAC address (**BSSID**), the signal strength (**signal**), the channel used (**channel**), the encryption algorithm (**encryption**) and the authentication (**authentication**) and the type of network (**network type**) are displayed.

The lower section of this window shows the connection status (**Connected / Disconnected**). Click **RESCAN** to search for wireless networks again.



7.1 Quick configuration

First, select the required WLAN network by clicking the corresponding line in the list. The network selected is highlighted in blue in the list. Now click the **Connect** button.

You are connected to the network if the selected network is run without encryption and the signal is strong enough. This is indicated by the green symbol and **Connect** is shown in the status window.

If you have activated encryption, you are asked for the code. Enter the code in the corresponding field.

You can enter the data required for encryption here. The data must be identical to the router or access point settings. The **authentication type** and **encryption** are generally already selected in accordance with the target network. Enter the code which must correspond exactly with the code used by the router or access point. Click **OK** to confirm after you make your entries.



If you do not have this code yourself, please contact the person responsible for configuring the router or access point. For detailed information on setting encryption, please see Page 10, under the heading: **Setting the wireless LAN encryption.**

For further information on the connection made, open the **Link status** tab. This shows information such as the **Link quality** and **Signal strength**.

7.2 Detailed configuration

When configuring your Hama WLAN USB stick, it is useful to create a **profile**. A profile serves to save various settings for a connection under a certain name. For example, if you want to connect to various wireless networks, you can save the settings for the networks in profiles, which allows you to change the configuration quickly.

7.2.1 Creating a new profile

You need the following information to create a profile (**Profile**):

- **SSID** (network ID): This is the name of the required network.
- **Encryption Type**: Encryption used in the target network
- **(Network Type)**: (type of network): Infrastructure or ad-hoc

Open the Wireless Utility. Using the Network overview (**Site survey**) tab, you can select the required network and then open the dialog box using the **ADD PROFILE** button, or open the Profile tab and start the dialog box by clicking the **ADD button**.

First enter a name for your profile (**Profile name**). Under SSID, select the network you want to connect to from the list of available networks.

To reduce the energy consumption, you can run the stick in **Power saving mode**. In this mode, certain functions are deactivated or run at a lower setting if they are not fully used. Select **CAM (Constantly Awake Mode)**, if you want to run the stick at full power all the time.

This Hama WLAN USB Stick allows you to set up two different network types. Select **Infrastructure** under Network type, if you want to connect to a router or access point. The settings for **TX Power**, **RTS Threshold** and **Fragment Threshold** can be left at the default settings.

If you want to connect to another WLAN client device without a router or access point, select **802.11 Ad-hoc**.

The settings for **TX Power**, **Channel**, **RTS Threshold** and **Fragment Threshold** can be left at the default settings.



7.2.2 Setting the wireless LAN encryption

First, it is important to understand a range of terms. The next section will explain the main terms used here:

Authentication: Authentication is a process in which the identity, e.g. of a person is determined based on a certain characteristic. This can be done by fingerprint, password or any other proof of authorisation.

Encryption: Encryption is a process in which a plain text is transformed into a coded text via an encryption process (algorithm). One or more codes can be used for this. It must also be mentioned that each individual encryption process offers one or more authentication options.

This device can be used with the following encryption types:

64 and 128 bit WEP encryption and WPA Encryption

Note!!! Encryption is deactivated by default. However, for security reasons, we recommend that you always use encryption.

7.2.2.1 WEP encryption

Wired Equivalent Privacy (**WEP**) is a standard encryption algorithm for WLAN. It both controls the access to the network and guarantees the integrity of the data. This method is considered vulnerable due to a range of weaknesses.

If you want to use WEP encryption, select the following settings:

Two options are available for the **Authentication type** under WEP.

Select **Open** if all clients are to be enabled for WLAN. Now there is virtually no other authentication.

Select **Shared** if you want to use authentication with the challenge response process. A shared code is used for authentication in this method. All WLAN users must know this code.

All other selection options under **Authentication type** are meaningless under WEP.



You can now store four codes in the lower section of the window. The selected code is always used.

64 bit or **128 bit** encryption is supported. 128 bit encryption is more secure. First select whether you want to use **Hexadecimal** (allows characters from 0-9 and a-f to be used) or **ASCII** (you can use any characters). The setting and the selection of either 64 or 128 bit encryption determines the length of the code to be entered.

WEP 64 bit ASCII requires 5 characters

WEP 64 bit hexadecimal requires 10 characters

WEP 128 bit ASCII requires 13 characters

WEP 128 bit hexadecimal requires 26 characters

Examples: 64 bit hexadecimal (10 characters) = 231074a6ef
64 bit ASCII (5 characters) = j31n.

128 bit hexadecimal (26 characters) = 231074a6b9773ce43f91a5bef3
128 bit ASCII (13 characters) = urlaub2006.+0

7.2.2.2 WPA encryption

Wi-Fi Protected Access (**WPA**) is an encryption method for WLAN. WPA contains the WEP architecture, but offers additional protection via dynamic codes, which are based on the Temporal Key Integrity Protocol (TKIP), and also offers pre-shared keys (PSK) or extensible authentication protocol (EAP) for user authentication. However, a radius server is required for this.

WPA offers two types of authentication, either pre-shared key or authentication via special authentication protocols, which are generally variations of EAP (**Extensible Authentication Protocol**). An authentication server (**RADIUS server**) is used for the latter authentication method, which is rarely used for private applications. Your administrator can give you the information you require to configure this authentication method.

The pre-shared key method is more common and offers a high degree of security.

To use WPA encryption, select **WPA-PSK** under Authentication type and **TKIP** or **AES** under Encryption.

Now enter the code used in the **WPA pre-shared key** field.

The code entered must be absolutely identical with that used in the network. It must be min. 8 and max. 63 random characters for **ASCII**. Letters (A-Z), numbers and punctuation marks can be used. 64 characters are required for **HEX**, whereby only characters from 0-9 and a-f can be used. If you do not have this code, it can be found in your router/access point or you can ask the person responsible for these devices. Save the settings and click **OK**.



8. Support and contact information

If products are defective:

Please contact your dealer or Hama Product Consulting if you have any product claims.

Internet / World Wide Web:

Product support, new drivers or product information can be found at www.hama.com

Support Hotline – Hama Product Consulting:

Tel. +49 (0) 9091 / 502-115

Fax +49 (0) 9091 / 502-272

E-mail: produktberatung@hama.de

Note:

This product may only be used in Germany, Austria, Switzerland, France, England, Belgium, Spain, Holland, Italy, Denmark, Hungary, Poland, Sweden, Portugal, Luxemburg, Ireland, Greece, the Czech Republic, Slovakia and Finland.

See www.hama.com for the declaration of conformity with R&TTE Directive 99/5/EC.



